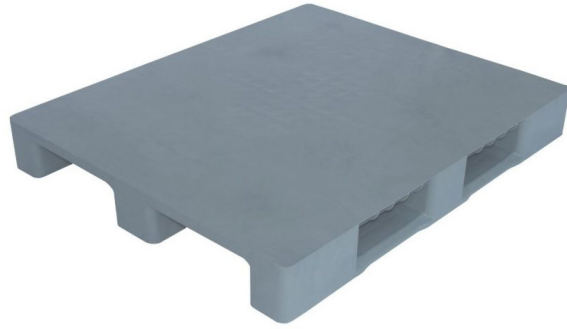


TECHNICAL DATA SHEET



DIMENSION	STATIC LOAD	DYNAMIC LOAD	RACK LOAD	RUNNER / FEET	REINFORCEMENT	RIM OPTIONS	ANTISLIP OPTION
1000x1200x145	3000 kg	1000 kg	400 kg	2 Runner	none	no rim 4 mm rim	NO

PRODUCT CODE	QUALITY	RM	COLOR	WEIGHT
DPP 1210 PS Q1	Q1	HDPE	White Light Gray	12,2 kg
DPP 1210 PS Q2	Q2	r - HDPE + HDPE	Dark Gray	12,5 kg

TRANSPORT	Truck (2,95)	20 ft	40 ft HQ	40 ft PW HQ	45 ft PW HQ
	660	233	540	540	594